

A0007

W Stainwall®



A0007



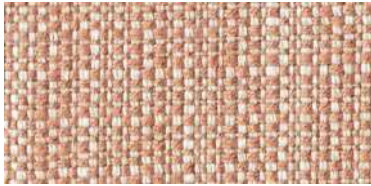
A0007 | 9663



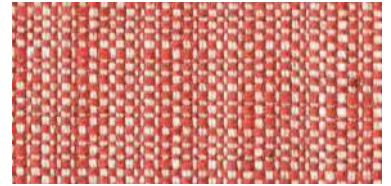
A0007 | 9608



A0007 | 9668



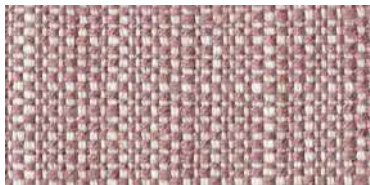
A0007 | 9669



A0007 | 9664



A0007 | 9604



A0007 | 9667



A0007 | 9614



A0007 | 9601



A0007 | 9600



A0007 | 9606

A0007



A0007 | 9661



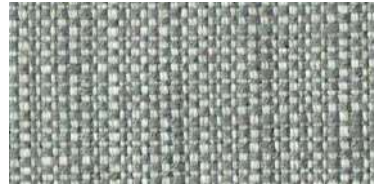
A0007 | 9603



A0007 | 9666



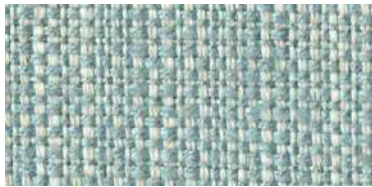
A0007 | 9616



A0007 | 9609



A0007 | 9602



A0007 | 9605



A0007 | 9619



A0007 | 9612



A0007 | 9615



A0007

MADE IN
BARCELONA



ROIG
70 ANYS

DABEDAN
TEJIDOS IGNÍFUGOS

ROIG
original fabrics
by DABEDAN

Composition
Composició 74 % Viscose
26 % Linen

Weight
Peso 675 g/lm - 475 g/m2

Width
Ancho 140 cm (±2%)

Roll length
Longitud pieza ± 35 m

Pilling 4-5 (A)
EN ISO 12945-2:2020
SCALE A-D; A, best value

Abrasion Resistance
Resistencia a la abrasión 50.000 Cycles
(A)
EN ISO 12947-2:1998/AC:2006
SCALE A-C; A, best value

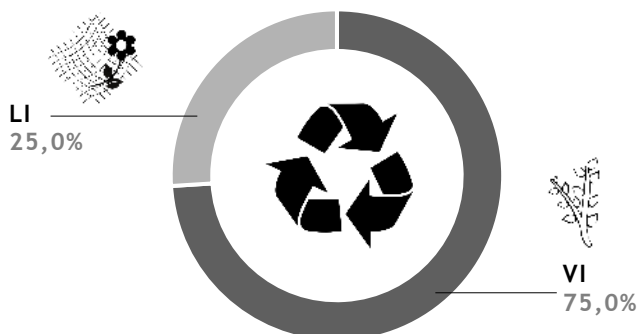
Seam slippage resistance
Resistencia a las costuras Warp: 2,50 mm
Weft: 3,90 mm
(A)
EN ISO 13936-2:2004
SCALE A-D; A, best value

Breaking strenght
Resistencia a la tracción Warp: 1000 N
Weft: 1200 N (A)
EN ISO 13934-1:2013
SCALE A-D; A, best value

washing machine (30°C)
Estabilidad dimensional
al lavado doméstico (30°C) Warp: 4 % (±3%)
Weft: 4 % (±3%)

Upholstery classification
Clasificación tapicería (A)
EN 14465:2003/A1:2006
SCALE A-D; A, best value

Fire reaction certification
Certificado reacción al fuego EN 1021 Part 1



Stain resistance
Antimanchas



Washing Instructions
Instrucciones de lavado

All our fabrics are designed and produced in our factory. Todos nuestros tejidos están diseñados y producidos en nuestra fábrica.