



# regina

**W Stainwall®**

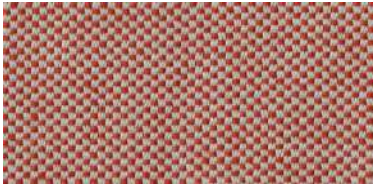




# regina



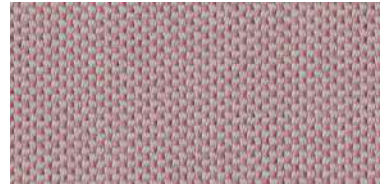
regina | 1467



regina | 1464\*



regina | 1468



regina | 1457



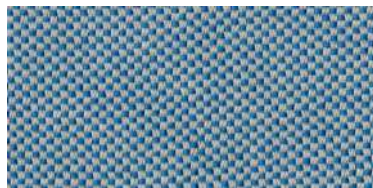
regina | 1456



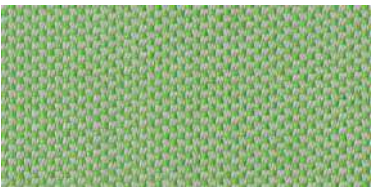
regina | 1454\*



regina | 1459



regina | 1455\*



regina | 1452\*



regina | 1458

# regina



regina | 1450



regina | 1451



regina | 1461\*



regina | 1465



regina | 1462



regina | 1466



regina | 1469



# regina



MADE IN  
BARCELONA

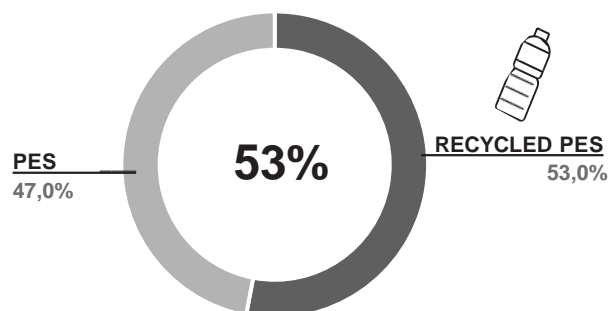


**ROIG**  
70 ANYS



**ROIG**  
original fabrics  
by DABEDAN

<b>Composition</b> <b>Composició</b>	53% Recycled Polyester 47% Polyester
<b>Weight</b> <b>Peso</b>	533 g/lm - 375 g/m2 ± 5%
<b>Width</b> <b>Ancho</b>	140 cm (±2%)
<b>Roll length</b> <b>Longitud pieza</b>	± 35 m
<b>Pilling</b>	5 (A) EN ISO 12945-2:2020 SCALE A-D; A, best value
<b>Abrasion Resistance</b> <b>Resistencia a la abrasión</b>	> 100.000 Cycles (A) EN ISO 12947-2:1998/AC:2006 SCALE A-C; A, best value
<b>Seam slippage resistance</b> <b>Resistencia a las costuras</b>	Warp: 2,40 mm Weft: 1,30 mm (A) EN ISO 13936-2:2004 SCALE A-D; A, best value
<b>Breaking strenght</b> <b>Resistencia a la tracción</b>	Warp: 2800 N Weft: 1300 N (A) EN ISO 13934-1:2013 SCALE A-D; A, best value
<b>Dimensional stability</b> <b>washing machine (30°C)</b> <b>Estabilidad dimensional</b> <b>al lavado doméstico (30°C)</b>	Warp: 1 % (±3%) Weft: 1 % (±3%)
<b>Upholstery classification</b> <b>Clasificación tapicería</b>	(A) EN 14465:2003/A1:2006 SCALE A-D; A, best value
<b>Fire reaction certification</b> <b>Certificado reacción al fuego</b>	EN 1021 Part 1 and 2



Stain resistance  
Antimanchas



Washing Instructions  
Instrucciones de lavado

All our fabrics are designed and produced in our factory. Todos nuestros tejidos están diseñados y producidos en nuestra fábrica.