

**ROIG**  
original fabrics  
by **DABEDAN**

UPHOLSTERY  
CATALOGUE

# UPHOLSTERY

A0007

DESERT

ELLA

TERRA

NINA

REGINA

LOOM

**ROIG**  
original fabrics  
by DABEDAN

# A0007

**W Stainwall®**



# A0007



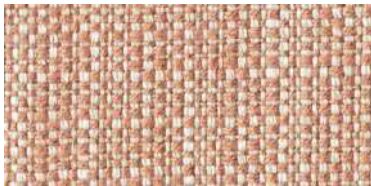
A0007 | 9663



A0007 | 9608



A0007 | 9668



A0007 | 9669



A0007 | 9664



A0007 | 9604



A0007 | 9667



A0007 | 9614



A0007 | 9601



A0007 | 9600



A0007 | 9606

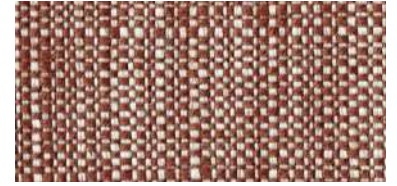
# A0007



A0007 | 9661



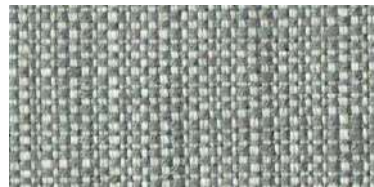
A0007 | 9603



A0007 | 9666



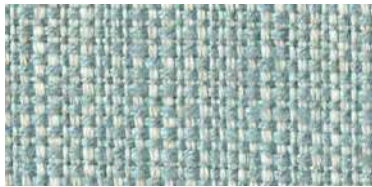
A0007 | 9616



A0007 | 9609



A0007 | 9602



A0007 | 9605



A0007 | 9619



A0007 | 9612



A0007 | 9615



# A0007

MADE IN  
BARCELONA



**ROIG**  
70 ANYS

**DABEDAN**  
TEJIDOS IGNIFUGOS

**ROIG**  
original fabrics  
by DABEDAN

**Composition**  
**Composició** 74 % Viscose  
26 % Linen

**Weight**  
**Peso** 675 g/lm - 475 g/m2

**Width**  
**Ancho** 140 cm (±2%)

**Roll length**  
**Longitud pieza** ± 35 m

**Pilling** 4-5 (A)  
EN ISO 12945-2:2020  
SCALE A-D; A, best value

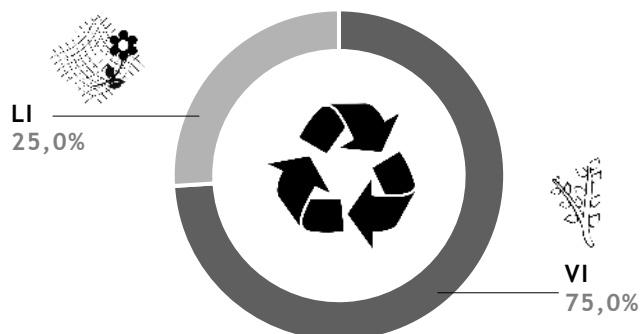
**Abrasion Resistance**  
**Resistencia a la abrasión** 50.000 Cycles  
(A)  
EN ISO 12947-2:1998/AC:2006  
SCALE A-C; A, best value

**Seam slippage resistance**  
**Resistencia a las costuras** Warp: 2,50 mm  
Weft: 3,90 mm  
(A)  
EN ISO 13936-2:2004  
SCALE A-D; A, best value

**Breaking strenght**  
**Resistencia a la tracción** Warp: 1000 N  
Weft: 1200 N (A)  
EN ISO 13934-1:2013  
SCALE A-D; A, best value

**washing machine (30°C)**  
**Estabilidad dimensional**  
**al lavado doméstico (30°C)** Warp: 4 % (±3%)  
Weft: 4 % (±3%)

**Upholstery classification**  
**Clasificación tapicería** (A)  
EN 14465:2003/A1:2006  
SCALE A-D; A, best value



Stain resistance  
Antimanchas



Washing Instructions  
Instrucciones de lavado

All our fabrics are designed and produced in our factory. Todos nuestros tejidos están diseñados y producidos en nuestra fábrica.

# desert

**W Stainwall®**



# desert



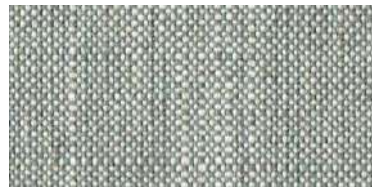
desert | 9700



desert | 9703



desert | 9701



desert | 9709



desert | 9705



desert | 9702



desert | 9715



desert | 8712



desert | 9761



desert | 9763



desert | 9708



desert | 9716



desert | 9769



# desert



desert | 9768



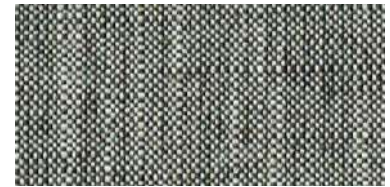
desert | 9706



desert | 9764



desert | 9704



desert | 9719



desert | 9767



desert | 9714



desert | 9766

# desert

MADE IN  
BARCELONA

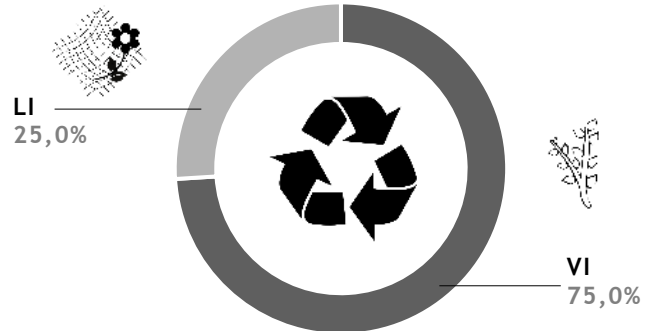


**ROIG**  
70 ANYS

**DABEDAN**  
TEJIDOS IGNÍFUGOS

**ROIG**  
original fabrics  
by DABEDAN

<b>Composition</b> <b>Composició</b>	75 % Viscose 25 % Linen
<b>Weight</b> <b>Peso</b>	610 g/lm - 430 g/m2
<b>Width</b> <b>Ancho</b>	140 cm (±2%)
<b>Roll length</b> <b>Longitud pieza</b>	± 35 m
<b>Pilling</b>	4-5 (A) EN ISO 12945-2:2020 SCALE A-D; A, best value
<b>Abrasion Resistance</b> <b>Resistencia a la abrasión</b>	50.000 Cycles (A) EN ISO 12947-2:1998/AC:2006 SCALE A-C; A, best value
<b>Seam slippage resistance</b> <b>Resistencia a las costuras</b>	Warp: 2,70 mm Weft: 2,50 mm (A) EN ISO 13936-2:2004 SCALE A-D; A, best value
<b>Breaking strenght</b> <b>Resistencia a la tracción</b>	Warp: 940 N Weft: 930 N (A) EN ISO 13934-1:2013 SCALE A-D; A, best value
<b>Dimensional stability</b> <b>washing machine (30°C)</b> <b>Estabilidad dimensional</b> <b>al lavado doméstico (30°C)</b>	Warp: 3 % (±3%) Weft: 3 % (±3%)
<b>Upholstery classification</b> <b>Clasificación tapicería</b>	(A) EN 14465:2003/A1:2006 SCALE A-D; A, best value



Stain resistance  
Antimanchas



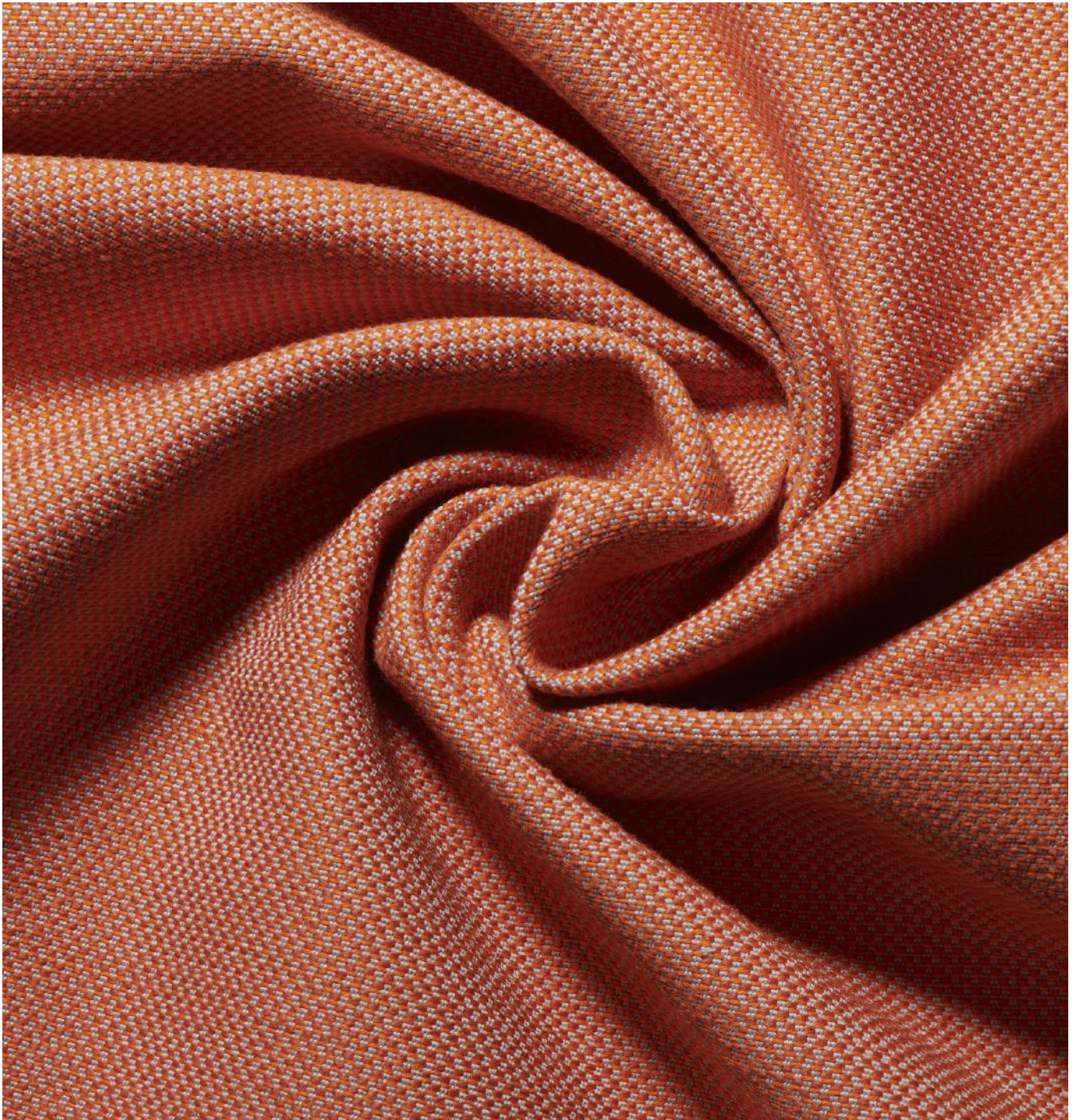
Washing Instructions  
Instrucciones de lavado

All our fabrics are designed and produced in our factory. Todos nuestros tejidos están diseñados y producidos en nuestra fábrica.



# ella

**W Stainwall®**



# ella



ella | 1500



ella | 1511



ella | 1501



ella | 1512



ella | 1502



ella | 1506



ella | 1513



ella | 1508\*



ella | 1527



ella | 91507



ella | 1524\*



ella | 1528\*

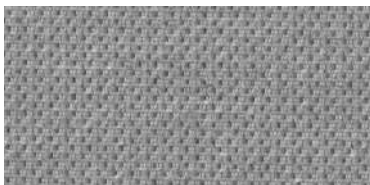


ella | 1526\*

# ella



ella | 1515



ella | 1517



ella | 1514



ella | 1522\*



ella | 1525



ella | 1519



ella | 1529

# ella



MADE IN  
BARCELONA

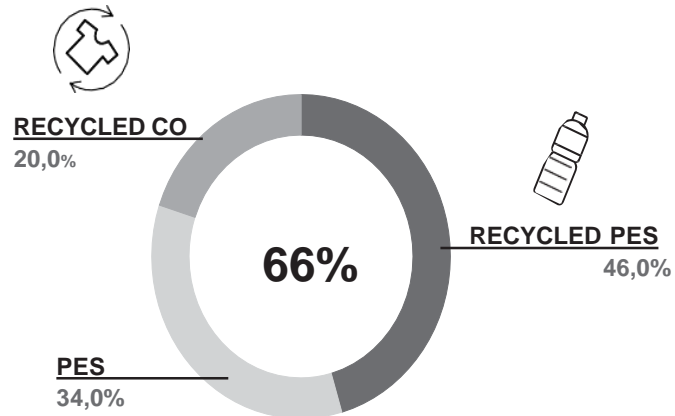


**ROIG**  
**70 ANYS**



**ROIG**  
original fabrics  
by DABEDAN

<b>Composition</b> <b>Composició</b>	46 % Recycled Polyester 20% Recycled Cotton 34 % Polyester
<b>Weight</b> <b>Peso</b>	610 g/lm - 430 g/m2 ± 5%
<b>Width</b> <b>Ancho</b>	140 cm (±2%)
<b>Roll length</b> <b>Longitud pieza</b>	± 35 m
<b>Pilling</b>	5 (A) EN ISO 12945-2:2020 SCALE A-D; A, best value
<b>Abrasion Resistance</b> <b>Resistencia a la abrasión</b>	90.000 Cycles (A) EN ISO 12947-2:1998/AC:2006 SCALE A-C; A, best value
<b>Seam slippage resistance</b> <b>Resistencia a las costuras</b>	Warp: 2,30 mm Weft: 1,20 mm (A) EN ISO 13936-2:2004 SCALE A-D; A, best value
<b>Breaking strenght</b> <b>Resistencia a la tracción</b>	Warp: 2500 N Weft: 1300 N (A) EN ISO 13934-1:2013 SCALE A-D; A, best value
<b>Dimensional stability</b> <b>washing machine (30°C)</b> <b>Estabilidad dimensional</b> <b>al lavado doméstico (30°C)</b>	Warp: 1 % (±3%) Weft: 1 % (±3%)
<b>Upholstery classification</b> <b>Clasificación tapicería</b>	(A) EN 14465:2003/A1:2006 SCALE A-D; A, best value



Stain resistance  
Antimanchas



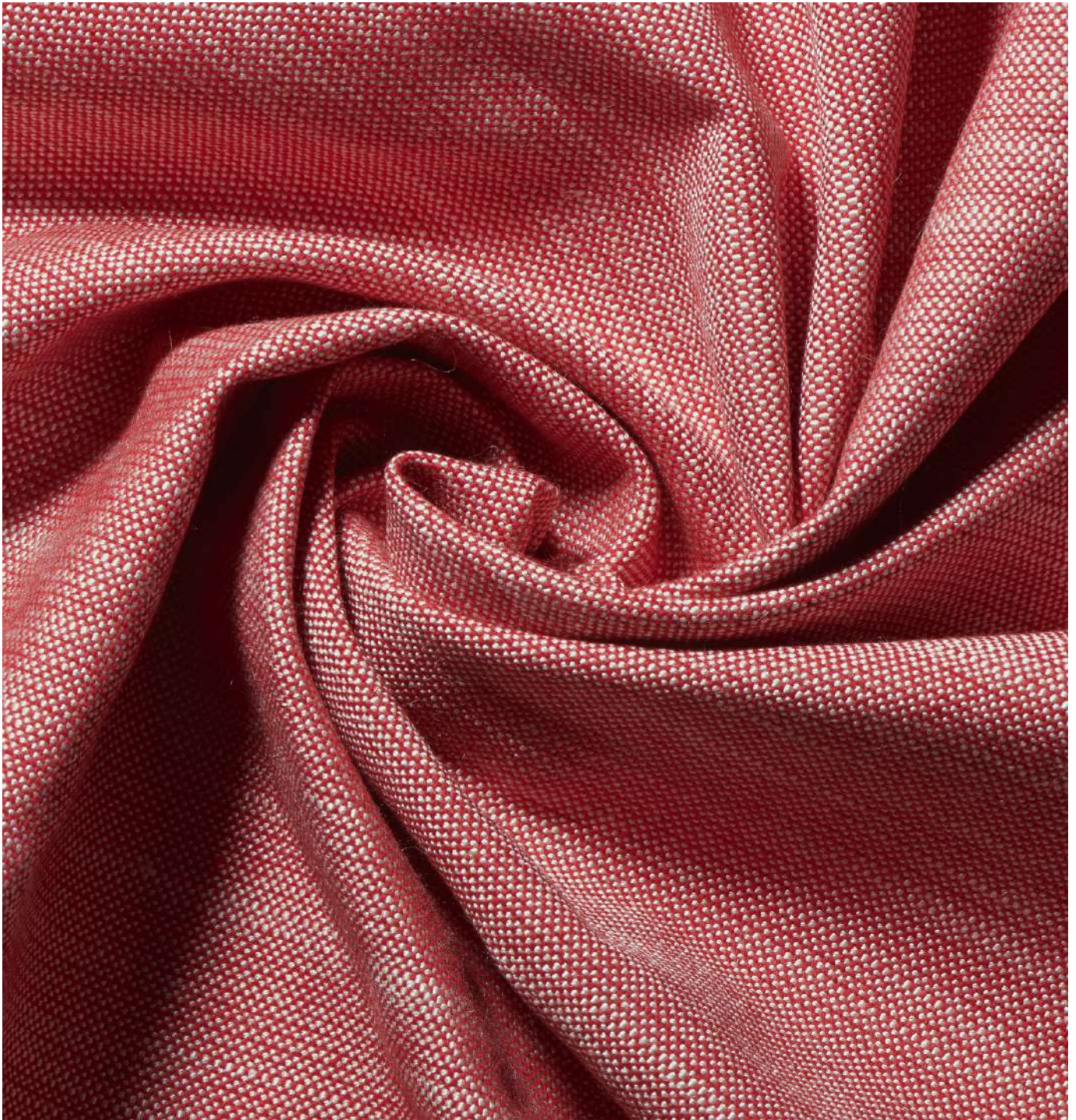
Washing Instructions  
Instrucciones de lavado

All our fabrics are designed and produced in our factory. Todos nuestros tejidos están diseñados y producidos en nuestra fábrica.



# terra

**W Stainwall®**



# terra



terra | 9890



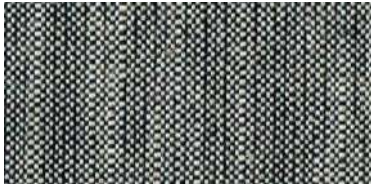
terra | 9880



terra | 19895



terra | 9883



terra | 9899



terra | 9892



terra | 9896



terra | 9888



terra | 9887



terra | 9884



terra | 9882



terra | 9885





# terra

MADE IN  
BARCELONA

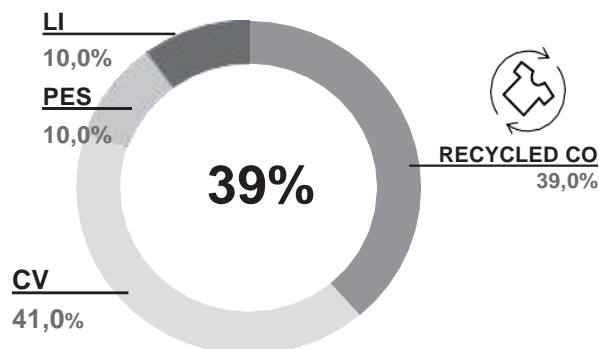


**ROIG**  
70 ANYS

**DABEDAN**  
TEJIDOS IGNIFUGOS

**ROIG**  
original fabrics  
by DABEDAN

<b>Composition</b> <b>Composició</b>	39% Recycled Cotton 41% Viscose 10 % Linen 10% Polyester
<b>Weight</b> <b>Peso</b>	574 g/lm – 405 g/m2 ± 5%
<b>Width</b> <b>Ancho</b>	140 cm (±2%)
<b>Roll length</b> <b>Longitud pieza</b>	± 35 m
<b>Pilling</b>	4 - 5 (A) EN ISO 12945-2:2020 SCALE A-D; A, best value
<b>Abrasion Resistance</b> <b>Resistencia a la abrasión</b>	50.000 Cycles (A) EN ISO 12947-2:1998/AC:2006 SCALE A-C; A, best value
<b>Seam slippage resistance</b> <b>Resistencia a las costuras</b>	Warp: 2,20 mm Weft: 3,20 mm (A) EN ISO 13936-2:2004 SCALE A-D; A, best value
<b>Breaking strenght</b> <b>Resistencia a la tracción</b>	Warp: 1100 N Weft: 1300 N (A) EN ISO 13934-1:2013 SCALE A-D; A, best value
<b>Dimensional stability</b> <b>washing machine (30°C)</b> <b>Estabilidad dimensional</b> <b>al lavado doméstico (30°C)</b>	Warp: 3 % (±3%) Weft: 3 % (±3%) (A)
<b>Upholstery classification</b> <b>Clasificación tapicería</b>	EN 14465:2003/A1:2006 SCALE A-D; A, best value



Stain resistance  
Antimanchas



Washing Instructions  
Instrucciones de lavado

All our fabrics are designed and produced in our factory. Todos nuestros tejidos están diseñados y producidos en nuestra fábrica.



# nina

**W Stainwall®**



# nina



nina | 1100



nina | 1115



nina | 1105



nina | 1101



nina | 1125



nina | 1113



nina | 1129



nina | 1119



nina | 1109



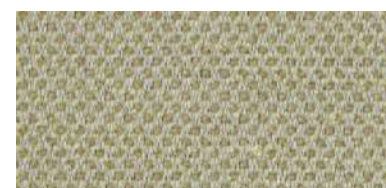
nina | 1118



nina | 1112\*



nina | 1111



nina | 1102

# nina



nina | 1117



nina | 1123



nina | 1104



nina | 1127



nina | 1114\*



nina | 1124\*



nina | 1126



# nina



MADE IN  
BARCELONA

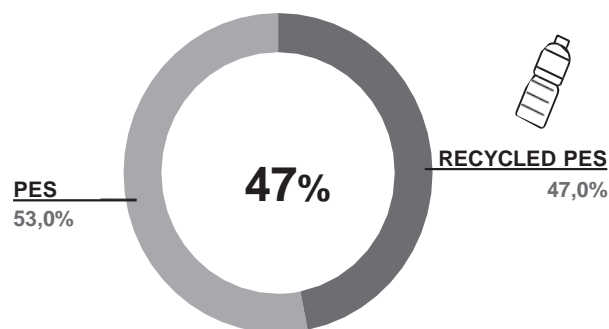


**ROIG**  
70 ANYS



**ROIG**  
original fabrics  
by DABEDAN

<b>Composition</b> <b>Composició</b>	47% Recycled Polyester 53% Polyester
<b>Weight</b> <b>Peso</b>	610 g/lm - 430 g/m2 ± 5%
<b>Width</b> <b>Ancho</b>	140 cm (±2%)
<b>Roll length</b> <b>Longitud pieza</b>	± 35 m
<b>Pilling</b>	5 (A) EN ISO 12945-2:2020 SCALE A-D; A, best value
<b>Abrasion Resistance</b> <b>Resistencia a la abrasión</b>	> 100.000 Cycles (A) EN ISO 12947-2:1998/AC:2006 SCALE A-C; A, best value
<b>Seam slippage resistance</b> <b>Resistencia a las costuras</b>	Warp: 2,50 mm Weft: 1,00 mm (A) EN ISO 13936-2:2004 SCALE A-D; A, best value
<b>Breaking strenght</b> <b>Resistencia a la tracción</b>	Warp: 2900 N Weft: 1400 N (A) EN ISO 13934-1:2013 SCALE A-D; A, best value
<b>Dimensional stability</b> <b>washing machine (30°C)</b> <b>Estabilidad dimensional</b> <b>al lavado doméstico (30°C)</b>	Warp: 1 % (±3%) Weft: 1 % (±3%)
<b>Upholstery classification</b> <b>Clasificación tapicería</b>	(A) EN 14465:2003/A1:2006 SCALE A-D; A, best value



Stain resistance  
Antimanchas



Washing Instructions  
Instrucciones de lavado

All our fabrics are designed and produced in our factory. Todos nuestros tejidos están diseñados y producidos en nuestra fábrica.



# regina

**W Stainwall®**



# regina



regina | 1467



regina | 1464\*



regina | 1468



regina | 1457



regina | 1456



regina | 1454\*



regina | 1459



regina | 1455\*



regina | 1452\*



regina | 1458

# regina



regina | 1450



regina | 1451



regina | 1461\*



regina | 1465



regina | 1462



regina | 1466



regina | 1469





# regina



MADE IN  
BARCELONA

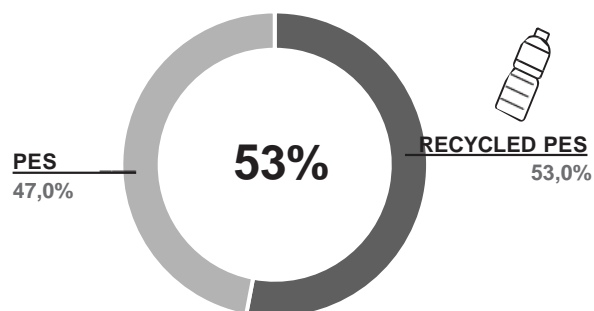


**ROIG**  
70 ANYS



**ROIG**  
original fabrics  
by DABEDAN

<b>Composition</b> <b>Composició</b>	53% Recycled Polyester 47% Polyester
<b>Weight</b> <b>Peso</b>	533 g/lm - 375 g/m2 ± 5%
<b>Width</b> <b>Ancho</b>	140 cm (±2%)
<b>Roll length</b> <b>Longitud pieza</b>	± 35 m
<b>Pilling</b>	5 (A) EN ISO 12945-2:2020 SCALE A-D; A, best value
<b>Abrasion Resistance</b> <b>Resistencia a la abrasión</b>	> 100.000 Cycles (A) EN ISO 12947-2:1998/AC:2006 SCALE A-C; A, best value
<b>Seam slippage resistance</b> <b>Resistencia a las costuras</b>	Warp: 2,40 mm Weft: 1,30 mm (A) EN ISO 13936-2:2004 SCALE A-D; A, best value
<b>Breaking strenght</b> <b>Resistencia a la tracción</b>	Warp: 2800 N Weft: 1300 N (A) EN ISO 13934-1:2013 SCALE A-D; A, best value
<b>Dimensional stability</b> <b>washing machine (30°C)</b> <b>Estabilidad dimensional</b> <b>al lavado doméstico (30°C)</b>	Warp: 1 % (±3%) Weft: 1 % (±3%)
<b>Upholstery classification</b> <b>Clasificación tapicería</b>	(A) EN 14465:2003/A1:2006 SCALE A-D; A, best value



Stain resistance  
Antimanchas



Washing Instructions  
Instrucciones de lavado

All our fabrics are designed and produced in our factory. Todos nuestros tejidos están diseñados y producidos en nuestra fábrica.



# loom

**W Stainwall®**



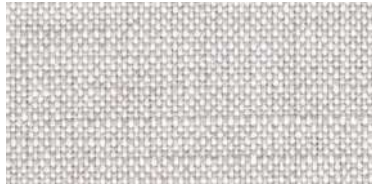
# loom



loom | 01



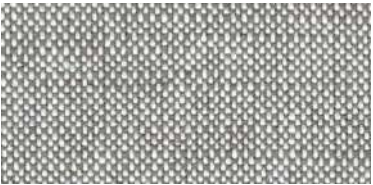
loom | 02



loom | 03



loom | 04



loom | 05



loom | 11



loom | 13



loom | 14



loom | 21

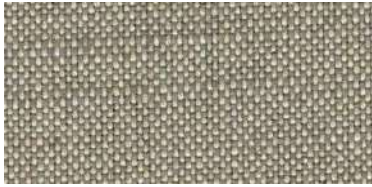


loom | 22

# loom



loom | 23



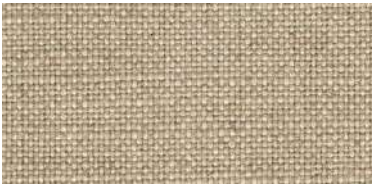
loom | 26



loom | 07



loom | 10



loom | 24



loom | 25



loom | 28



# loom

MADE IN  
BARCELONA



**ROIG**  
70 ANYS

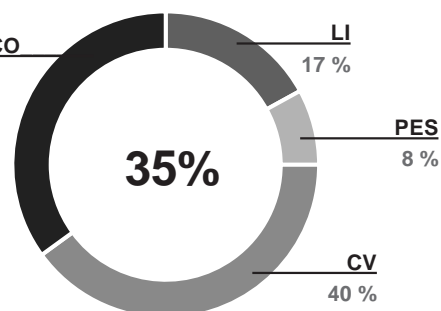
**DABEDAN**  
TEJIDOS IGNÍFUGOS

**ROIG**  
original fabrics  
by DABEDAN

<b>Composition Composició</b>	35 % Recycled Cotton 40 % Viscose 17 % Linen 8 % Polyester
<b>Weight Peso</b>	550 g/lm - 395 g/m2 ± 5%
<b>Width Ancho</b>	140 cm (±2%)
<b>Roll length Longitud pieza</b>	± 35 m
<b>Pilling</b>	5 (A) EN ISO 12945-2:2020 SCALE A-D; A, best value
<b>Abrasion Resistance Resistencia a la abrasión</b>	500.000 Cycles (A) Change of appearance 30000 c: 5 EN ISO 12947-2:1998/AC:2006 SCALE A-C; A, best value
<b>Seam slippage resistance Resistencia a las costuras</b>	Warp: 2,10 mm Weft: 3,10 mm (A) EN ISO 13936-2:2004 SCALE A-D; A, best value
<b>Breaking strenght Resistencia a la tracción</b>	Warp: 750 N Weft: 1100 N (A) EN ISO 13934-1:2013 SCALE A-D; A, best value
<b>Dimensional stability washing machine (30°C) Estabilidad dimensional al lavado doméstico (30°C)</b>	Warp: 3 % (±3%) Weft: 3 % (±3%)
<b>Upholstery classification Clasificación tapicería</b>	(A) EN 14465:2003/A1:2006 SCALE A-D; A, best value



**RECYCLED CO**  
35 %



Stain resistance  
Antimanchas



Washing Instructions  
Instrucciones de lavado

All our fabrics are designed and produced in our factory. Todos nuestros tejidos están diseñados y producidos en nuestra fábrica.



Avda. Can Bordoll, 55  
08202 Sabadell

BARCELONA  
+34 932 076 785

dabedan@dabedan.com  
www.dabedan.com